

# FLOS

## KAP Ø80 FIXED OPTIC FLOOD

<b>Number of heads</b>	1
<b>Mounting</b>	Ceiling recessed
<b>Lamps description</b>	LED Array DC 500 mA 8,7W 974 lm 3000K CRI 90
<b>Luminaire luminous flux</b>	Extreme Cut-off. See reference number
<b>Environment</b>	Indoor
<b>Notes</b>	Diffusing lens included. Fast&Perfect pre-installation frame to be ordered separately.

### OPTICAL

<b>Aiming</b>	Fixed
<b>Light distribution symmetry</b>	Symmetric

### ELECTRICAL

<b>Transformer availability</b>	Separate item
<b>Transformer mounting</b>	Remote
<b>Transformer type</b>	Electronic, Electronic dimmable, Electronic dimmable I-10V, Electronic dimmable DALI
<b>Emergency</b>	Without
<b>Insulation class</b>	Class III

### PHYSICAL

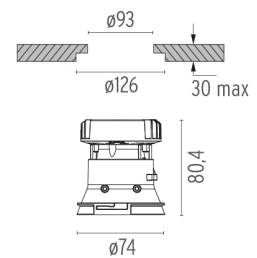
<b>Diameter (mm)</b>	74
<b>Recessed depth (mm)</b>	91
<b>Construction material</b>	Die-cast aluminum
<b>Weight (kg)</b>	0,24



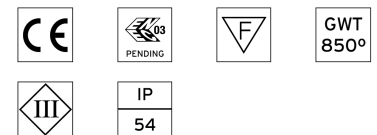
**Kap Ø80 Fixed Optic Flood**  
designed by FLOS Architectural

Recessed luminaire with LED light source. Power supply not included.

- 03.4532.GL - 45° - 687lm Gold
- 03.4532.B1 - 50° - 715lm White
- 03.4532.BU - 53° - 630lm Blue
- 03.4532.74 - 50° - 623lm Black
- 03.4532.CU - 45° - 676lm Copper



### CERTIFICATIONS



## Kap Ø80 Fixed Optic Flood . Accessories

### Power Supply



60.8534

#### Constant Current Power Supply for LED. 32W

Continuous current power supply of 32W, 230/240V - 50/60Hz with power current selected through adjustable 350/500/700 mA switch by trailing and leading edge dimming or push dimming.

Maximum length of 1.5 mm<sup>2</sup> secondary conductor (m): 10

Maximum length of 2.5 mm<sup>2</sup> secondary conductor (m): 15



60.8533

#### Constant Current Power Supply for LED. 25W

Continuous current power supply of 25W, 120-240V - 50/60Hz with power current selected through adjustable 350/500/700mA 1-T0V switch or push dimming.

Maximum length of 1.5 mm<sup>2</sup> secondary conductor (m): 10

Maximum length of 2.5 mm<sup>2</sup> secondary conductor (m): 15



60.8847

#### Constant Current Power Supply for LED. 10-20W

Continuous current power supply of 10-20W, 110/240V - 50/60Hz with power current selected through adjustable 250/350/400/450/500/ 550/600/700 mA Dali switch. (Johnny 120 with accessories max 450 mA)

Maximum length of 1.5 mm<sup>2</sup> secondary conductor (m): 10

Maximum length of 2.5 mm<sup>2</sup> secondary conductor (m): 15



60.8880

#### Constant Current Power Supply for LED. 6W-100/14W-240V

Continuous current power supply of 6W, 100V / 14W, 240V - 50/60Hz with 500 mA supply voltage.

Maximum length of 1.5 mm<sup>2</sup> secondary conductor (m): 50

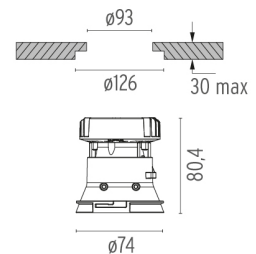
Maximum length of 2.5 mm<sup>2</sup> secondary conductor (m): 50



#### Kap Ø80 Fixed Optic Flood designed by FLOS Architectural

Recessed luminaire with LED light source. Power supply not included.

- 03.4532.GL - 45° - 687lm Gold
- 03.4532.B1 - 50° - 715lm White
- 03.4532.BU - 53° - 630lm Blue
- 03.4532.74 - 50° - 623lm Black
- 03.4532.CU - 45° - 676lm Copper



#### CERTIFICATIONS



# FLOS

## Kap Ø80 Fixed Optic Flood . Accessories

### Mounting



08.9102.00

**Installation frame No Trim**



08.9100.00

**Fast&Perfect tool ø126**



**Kap Ø80 Fixed Optic Flood**  
designed by FLOS Architectural

Recessed luminaire with LED light source. Power supply not included.

- 03.4532.GL - 45° - 687lm Gold
- 03.4532.B1 - 50° - 715lm White
- 03.4532.BU - 53° - 630lm Blue
- 03.4532.74 - 50° - 623lm Black
- 03.4532.CU - 45° - 676lm Copper

## Kap Ø80 Fixed Optic Flood . Lamps



### LED Array

**Lamp category:**

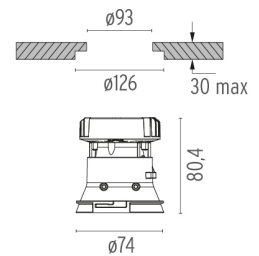
LED

**Socket:**

Special base

**Lamp type:**

LED Array



### CERTIFICATIONS



# FLOS

## KAP Ø80 ADJUSTABLE OPTIC FLOOD

<b>Number of heads</b>	1
<b>Mounting</b>	Ceiling recessed
<b>Lamps description</b>	LED Array DC 500 mA 8,7W 974 lm 3000K CRI 90
<b>Luminaire luminous flux</b>	Extreme Cut-off. See reference number
<b>Environment</b>	Indoor
<b>Notes</b>	Diffusing lens included. Fast&Perfect pre-installation frame to be ordered separately.

### OPTICAL

<b>Aiming</b>	Adjustable
<b>Light distribution symmetry</b>	Symmetric

### ELECTRICAL

<b>Transformer availability</b>	Separate item
<b>Transformer mounting</b>	Remote
<b>Transformer type</b>	Electronic, Electronic dimmable, Electronic dimmable I-10V, Electronic dimmable DALI
<b>Emergency</b>	Without
<b>Insulation class</b>	Class III

### PHYSICAL

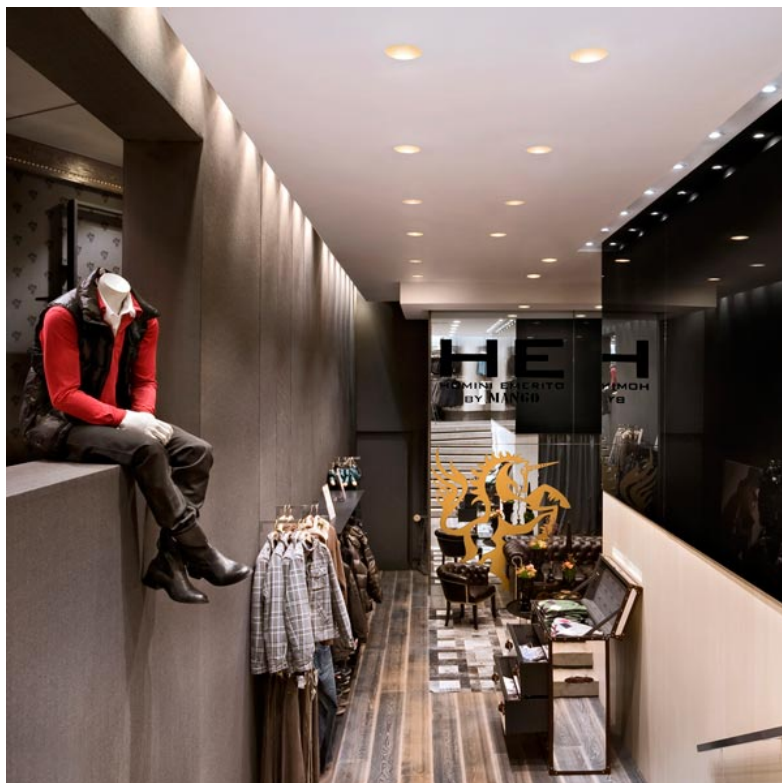
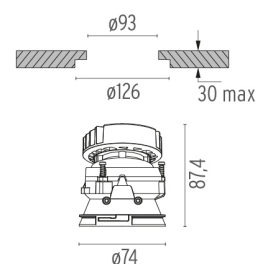
<b>Diameter (mm)</b>	74
<b>Recessed depth (mm)</b>	91
<b>Construction material</b>	Die-cast aluminum
<b>Weight (kg)</b>	0,24



**Kap Ø80 Adjustable Optic Flood**  
designed by FLOS Architectural

Recessed luminaire with LED light source. Power supply not included.

- 03.4540.GL - 45° - 694lm Gold
- 03.4540.B1 - 50° - 716lm White
- 03.4540.BU - 54° - 620lm Blue
- 03.4540.74 - 55° - 622lm Black
- 03.4540.CU - 46° - 682lm Copper



### CERTIFICATIONS



## Kap Ø80 Adjustable Optic Flood . Accessories

### Power Supply



60.8534

#### Constant Current Power Supply for LED. 32W

Continuous current power supply of 32W, 230/240V - 50/60Hz with power current selected through adjustable 350/500/700 mA switch by trailing and leading edge dimming or push dimming.

Maximum length of 1.5 mm<sup>2</sup> secondary conductor (m): 10

Maximum length of 2.5 mm<sup>2</sup> secondary conductor (m): 15



60.8533

#### Constant Current Power Supply for LED. 25W

Continuous current power supply of 25W, 120-240V - 50/60Hz with power current selected through adjustable 350/500/700mA 1-10V switch or push dimming.

Maximum length of 1.5 mm<sup>2</sup> secondary conductor (m): 10

Maximum length of 2.5 mm<sup>2</sup> secondary conductor (m): 15



60.8847

#### Constant Current Power Supply for LED. 10-20W

Continuous current power supply of 10-20W, 110/240V - 50/60Hz with power current selected through adjustable 250/350/400/450/500/ 550/600/700 mA Dali switch. (Johnny 120 with accessories max 450 mA)

Maximum length of 1.5 mm<sup>2</sup> secondary conductor (m): 10

Maximum length of 2.5 mm<sup>2</sup> secondary conductor (m): 15



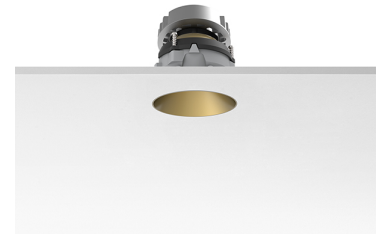
60.8880

#### Constant Current Power Supply for LED. 6W-100/14W-240V

Continuous current power supply of 6W, 100V / 14W, 240V - 50/60Hz with 500 mA supply voltage.

Maximum length of 1.5 mm<sup>2</sup> secondary conductor (m): 50

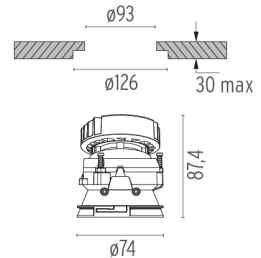
Maximum length of 2.5 mm<sup>2</sup> secondary conductor (m): 50



### Kap Ø80 Adjustable Optic Flood designed by FLOS Architectural

Recessed luminaire with LED light source. Power supply not included.

- 03.4540.GL - 45° - 694lm Gold
- 03.4540.BI - 50° - 716lm White
- 03.4540.BU - 54° - 620lm Blue
- 03.4540.74 - 55° - 622lm Black
- 03.4540.CU - 46° - 682lm Copper



### CERTIFICATIONS



# FLOS

## Kap Ø80 Adjustable Optic Flood . Accessories

### Mounting



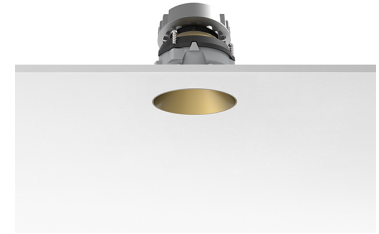
08.9102.00

**Installation frame No Trim**



08.9100.00

**Fast&Perfect tool ø126**



**Kap Ø80 Adjustable Optic Flood**  
designed by FLOS Architectural

Recessed luminaire with LED light source. Power supply not included.

- 03.4540.GL - 45° - 694lm Gold
- 03.4540.BI - 50° - 716lm White
- 03.4540.BU - 54° - 620lm Blue
- 03.4540.74 - 55° - 622lm Black
- 03.4540.CU - 46° - 682lm Copper

## Kap Ø80 Adjustable Optic Flood . Lamps



### LED Array

**Lamp category:**

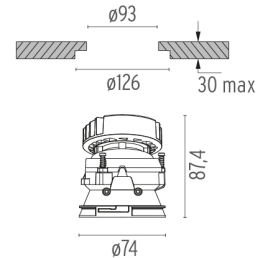
LED

**Socket:**

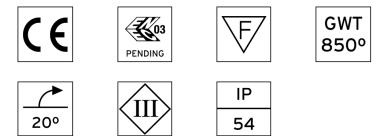
Special base

**Lamp type:**

LED Array



### CERTIFICATIONS



# FLOS

## KAP Ø80 WALL-WASHER

<b>Number of heads</b>	I
<b>Mounting</b>	Ceiling recessed
<b>Lamps description</b>	LED Array DC 500 mA 8,7W 974 lm 3000K CRI 90
<b>Luminaire luminous flux</b>	Extreme Cut-off. See reference number
<b>Environment</b>	Indoor
<b>Notes</b>	Diffusing lens included. Fast&Perfect pre-installation frame to be ordered separately.

### OPTICAL

<b>Aiming</b>	Fixed
<b>Light distribution symmetry</b>	Asymmetric

### ELECTRICAL

<b>Transformer availability</b>	Separate item
<b>Transformer mounting</b>	Remote
<b>Transformer type</b>	Electronic, Electronic dimmable, Electronic dimmable I-10V, Electronic dimmable DALI
<b>Emergency</b>	Without
<b>Insulation class</b>	Class III

### PHYSICAL

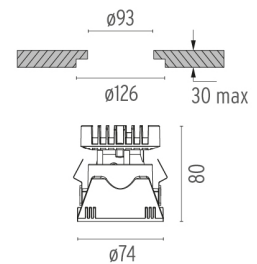
<b>Diameter (mm)</b>	74
<b>Recessed depth (mm)</b>	81
<b>Construction material</b>	Die-cast aluminum
<b>Weight (kg)</b>	0,24



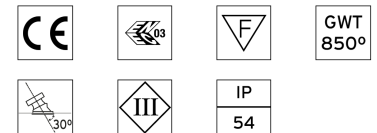
**Kap Ø80 Wall-Washer**  
designed by FLOS Architectural

Recessed luminaire with LED light source. Power supply not included.

- 03.4188.GL - 30° - 590lm Gold
- 03.4188.B1 - 28° - 622lm White
- 03.4188.BU - 28° - 660lm Blue
- 03.4188.74 - 26° - 567lm Black
- 03.4188.CU - 28° - 620lm Copper



### CERTIFICATIONS



## Kap Ø80 Wall-Washer . Accessories

### Power Supply



60.8534

#### Constant Current Power Supply for LED. 32W

Continuous current power supply of 32W, 230/240V - 50/60Hz with power current selected through adjustable 350/500/700 mA switch by trailing and leading edge dimming or push dimming.

Maximum length of 1.5 mm<sup>2</sup> secondary conductor (m): 10

Maximum length of 2.5 mm<sup>2</sup> secondary conductor (m): 15



60.8533

#### Constant Current Power Supply for LED. 25W

Continuous current power supply of 25W, 120-240V - 50/60Hz with power current selected through adjustable 350/500/700mA 1-10V switch or push dimming.

Maximum length of 1.5 mm<sup>2</sup> secondary conductor (m): 10

Maximum length of 2.5 mm<sup>2</sup> secondary conductor (m): 15



60.8847

#### Constant Current Power Supply for LED. 10-20W

Continuous current power supply of 10-20W, 110/240V - 50/60Hz with power current selected through adjustable 250/350/400/450/500/ 550/600/700 mA Dali switch. (Johnny 120 with accessories max 450 mA)

Maximum length of 1.5 mm<sup>2</sup> secondary conductor (m): 10

Maximum length of 2.5 mm<sup>2</sup> secondary conductor (m): 15



60.8880

#### Constant Current Power Supply for LED. 6W-100/14W-240V

Continuous current power supply of 6W, 100V / 14W, 240V - 50/60Hz with 500 mA supply voltage.

Maximum length of 1.5 mm<sup>2</sup> secondary conductor (m): 50

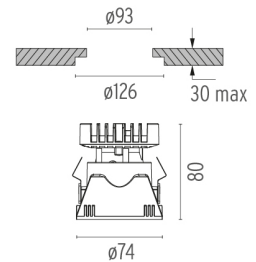
Maximum length of 2.5 mm<sup>2</sup> secondary conductor (m): 50



#### Kap Ø80 Wall-Washer designed by FLOS Architectural

Recessed luminaire with LED light source. Power supply not included.

- 03.4188.GL - 30° - 590lm Gold
- 03.4188.BI - 28° - 622lm White
- 03.4188.BU - 28° - 660lm Blue
- 03.4188.74 - 26° - 567lm Black
- 03.4188.CU - 28° - 620lm Copper



#### CERTIFICATIONS





# FLOS

## Kap Ø80 Wall-Washer . Accessories

### Mounting



08.9102.00

**Installation frame No Trim**



08.9100.00

**Fast&Perfect tool ø126**

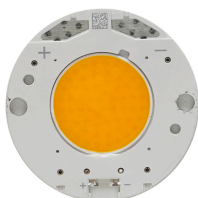


**Kap Ø80 Wall-Washer**  
designed by FLOS Architectural

Recessed luminaire with LED light source. Power supply not included.

- 03.4188.GL - 30° - 590lm Gold
- 03.4188.B1 - 28° - 622lm White
- 03.4188.BU - 28° - 660lm Blue
- 03.4188.74 - 26° - 567lm Black
- 03.4188.CU - 28° - 620lm Copper

## Kap Ø80 Wall-Washer . Lamps



### LED Array

**Lamp category:**

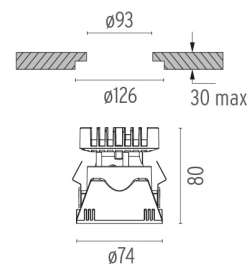
LED

**Socket:**

Special base

**Lamp type:**

LED Array



### CERTIFICATIONS

