

FLOS



Glo- Ball Ceiling/Wa Zero

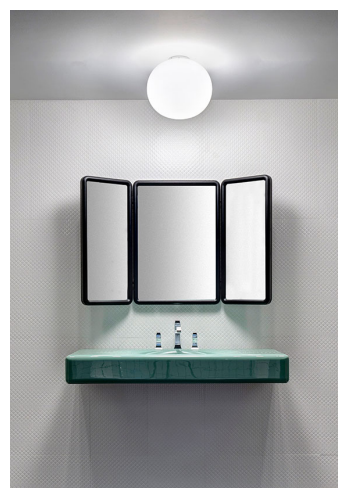
Glo-Ball Ceiling/Wall Zero

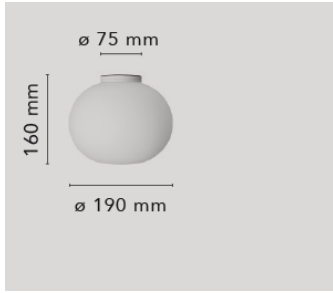
by Jasper Morrison , 2009

Item Code	F33350
Mounting	Ceiling/wall
Environment	Indoor
Finish	White
Weight	1kg.


Technical description

Wall or ceiling lamp providing diffused light. Diffuser consisting of an externally acidetched, hand blown, flashed opaline glass and a die-cast aluminum threaded ring nut with alodine plating finish. 30% fiberglass reinforced injectionmolded polyamide base. Gray painted, die-cast aluminum diffuser support.





Colors

 F3335009 - White

Light source

1 x 60W E14 HSGS
1 x LED 8W E14 800lm 3000K

Electrical

Emergency Without

Voltage 220/240

Battery No

Supply included Yes

Physical

Construction Material Glass

Weight (Kg) 1

Certificate



FLOS



Glo-Ball Ceiling 1



Glo-Ball Ceiling 1

by Jasper Morrison , 1999

Item Code F30230

Mounting Ceiling

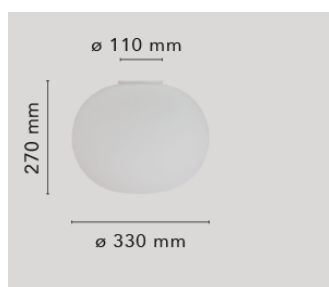
Environment Indoor

Finish White

Weight 2.5kg.

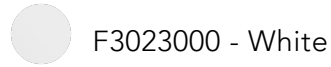
Technical description

Ceiling mounted lamp providing diffused light. Diffuser consisting of an externally acidetched, hand blown, flashed opaline glass and of a die-cast aluminum threaded ring nut with alodine plating



finish. 30% fiberglass reinforced injection-molded polyamide ceiling fitting; gray painted die-cast aluminum diffuser support.

Colors



Light source

1 x HSGS 150W E27
1 x LED 13W E27 1400lm 3000K

Electrical

Emergency Without

Voltage 230

Battery No

Supply included Yes

Physical

Construction Material Glass

Weight (Kg) 2.5

Certificate



FLOS



Glo-Ball Ceiling 2



Glo-Ball Ceiling 2

by Jasper Morrison , 1999

Item Code F30280

Mounting Ceiling

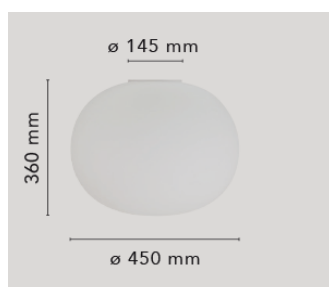
Environment Indoor

Finish White

Weight 5.1kg.

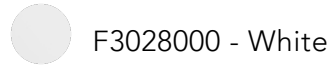
Technical description

Ceiling mounted lamp providing diffused light. Diffuser consisting of an externally acidetched, hand blown, flashed opaline glass and of a die-cast aluminum threaded ring nut with alodine plating



finish. 30% fiberglass reinforced injection-molded polyamide ceiling fitting; gray painted die-cast aluminum diffuser support.

Colors



Light source

1 x HSGS 205W E27
1 x LED 13W E27 1400lm 3000K

Electrical

Emergency Without

Voltage 230

Battery No

Supply included Yes

Physical

Construction Material Glass

Weight (Kg) 5.1

Certificate

