

## EASY KAP 80 SQUARE FIXED OPTIC FLOOD

<b>Number of heads</b>	1
<b>Mounting</b>	Ceiling recessed
<b>Lamps description</b>	LED Array DC 500 mA 8,7W 974 lm 3000K CRI 90
<b>Luminaire luminous flux</b>	Extreme Cut-off. See reference number
<b>Environment</b>	Indoor
<b>Notes</b>	Diffusing lens included

### OPTICAL

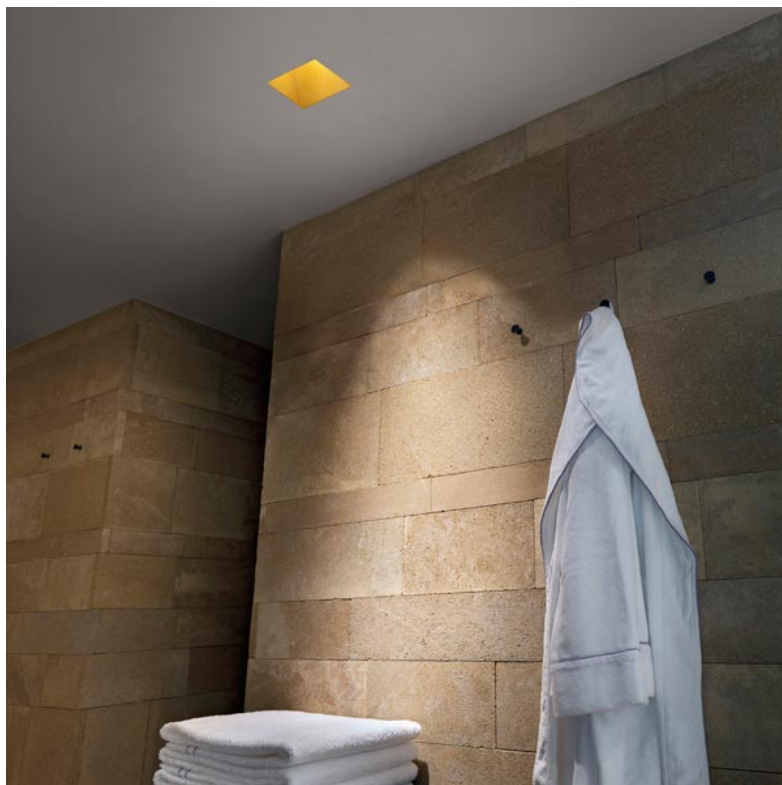
<b>Aiming</b>	Fixed
<b>Light distribution symmetry</b>	Symmetric

### ELECTRICAL

<b>Transformer availability</b>	Separate item
<b>Transformer mounting</b>	Remote
<b>Transformer type</b>	Electronic, Electronic dimmable, Electronic dimmable I-10V, Electronic dimmable DALI
<b>Emergency</b>	Without
<b>Insulation class</b>	Class III

### PHYSICAL

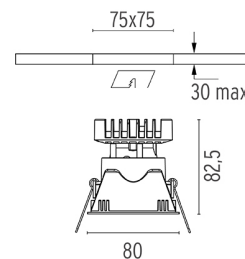
<b>Recessed depth (mm)</b>	93
<b>Construction material</b>	Die-cast aluminum
<b>Weight (kg)</b>	0,24



**Easy Kap 80 Square Fixed Optic Flood**  
designed by FLOS Architectural

Recessed luminaire with LED light source. Power supply not included. Installation frame not necessary.

- 03.4178.GL - 53° - 726lm Gold
- 03.4178.B1 - 55° - 745lm White
- 03.4178.BU - 55° - 660lm Blue
- 03.4178.74 - 55° - 660lm Black
- 03.4178.CU - 52° - 706lm Copper



### CERTIFICATIONS



## Easy Kap 80 Square Fixed Optic Flood . Accessories

### Power Supply



60.8534

#### Constant Current Power Supply for LED. 32W

Continuous current power supply of 32W, 230/240V - 50/60Hz with power current selected through adjustable 350/500/700 mA switch by trailing and leading edge dimming or push dimming.

Maximum length of 1.5 mm<sup>2</sup> secondary conductor (m): 10

Maximum length of 2.5 mm<sup>2</sup> secondary conductor (m): 15



60.8533

#### Constant Current Power Supply for LED. 25W

Continuous current power supply of 25W, 120-240V - 50/60Hz with power current selected through adjustable 350/500/700mA 1-10V switch or push dimming.

Maximum length of 1.5 mm<sup>2</sup> secondary conductor (m): 10

Maximum length of 2.5 mm<sup>2</sup> secondary conductor (m): 15



60.8847

#### Constant Current Power Supply for LED. 10-20W

Continuous current power supply of 10-20W, 110/240V - 50/60Hz with power current selected through adjustable 250/350/400/450/500/ 550/600/700 mA Dali switch. (Johnny 120 with accessories max 450 mA)

Maximum length of 1.5 mm<sup>2</sup> secondary conductor (m): 10

Maximum length of 2.5 mm<sup>2</sup> secondary conductor (m): 15



60.8880

#### Constant Current Power Supply for LED. 6W-100W/14W-240V

Continuous current power supply of 6W, 100V / 14W, 240V - 50/60Hz with 500 mA supply voltage.

Maximum length of 1.5 mm<sup>2</sup> secondary conductor (m): 50

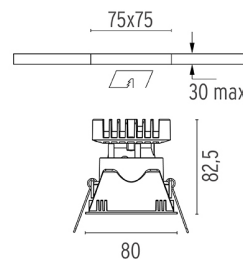
Maximum length of 2.5 mm<sup>2</sup> secondary conductor (m): 50



**Easy Kap 80 Square Fixed Optic Flood**  
designed by FLOS Architectural

Recessed luminaire with LED light source. Power supply not included. Installation frame not necessary.

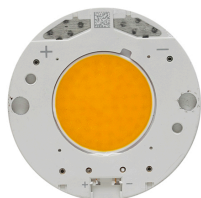
- 03.4178.GL - 53° - 726lm Gold
- 03.4178.BI - 55° - 745lm White
- 03.4178.BU - 55° - 660lm Blue
- 03.4178.74 - 55° - 660lm Black
- 03.4178.CU - 52° - 706lm Copper



### CERTIFICATIONS



## Easy Kap 80 Square Fixed Optic Flood . Lamps



### LED Array

**Lamp category:**  
LED

**Socket:**  
Special base

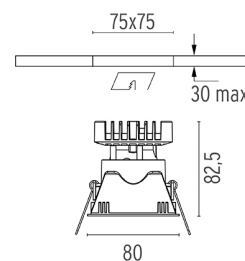
**Lamp type:**  
LED Array



**Easy Kap 80 Square Fixed Optic Flood**  
designed by FLOS Architectural

Recessed luminaire with LED light source. Power supply not included. Installation frame not necessary.

- 03.4178.GL - 53° - 726lm Gold
- 03.4178.BI - 55° - 745lm White
- 03.4178.BU - 55° - 660lm Blue
- 03.4178.74 - 55° - 660lm Black
- 03.4178.CU - 52° - 706lm Copper



### CERTIFICATIONS



## EASY KAP 80 SQUARE ADJUSTABLE OPTIC FLOOD

<b>Number of heads</b>	1
<b>Mounting</b>	Ceiling recessed
<b>Lamps description</b>	LED Array DC 500 mA 8,7W 974 lm 3000K CRI 90
<b>Luminaire luminous flux</b>	Extreme Cut-off. See reference number
<b>Environment</b>	Indoor
<b>Notes</b>	Diffusing lens included

### OPTICAL

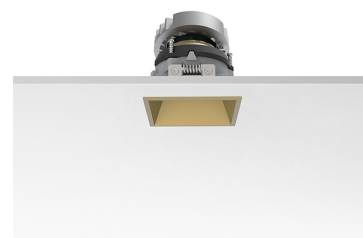
<b>Aiming</b>	Adjustable
<b>Light distribution symmetry</b>	Symmetric

### ELECTRICAL

<b>Transformer availability</b>	Separate item
<b>Transformer mounting</b>	Remote
<b>Transformer type</b>	Electronic, Electronic dimmable, Electronic dimmable I-10V, Electronic dimmable DALI
<b>Emergency</b>	Without
<b>Insulation class</b>	Class III

### PHYSICAL

<b>Recessed depth (mm)</b>	90
<b>Construction material</b>	Die-cast aluminum
<b>Weight (kg)</b>	0,24

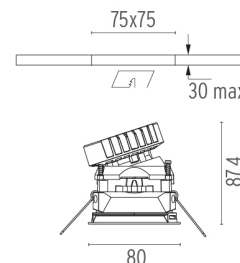
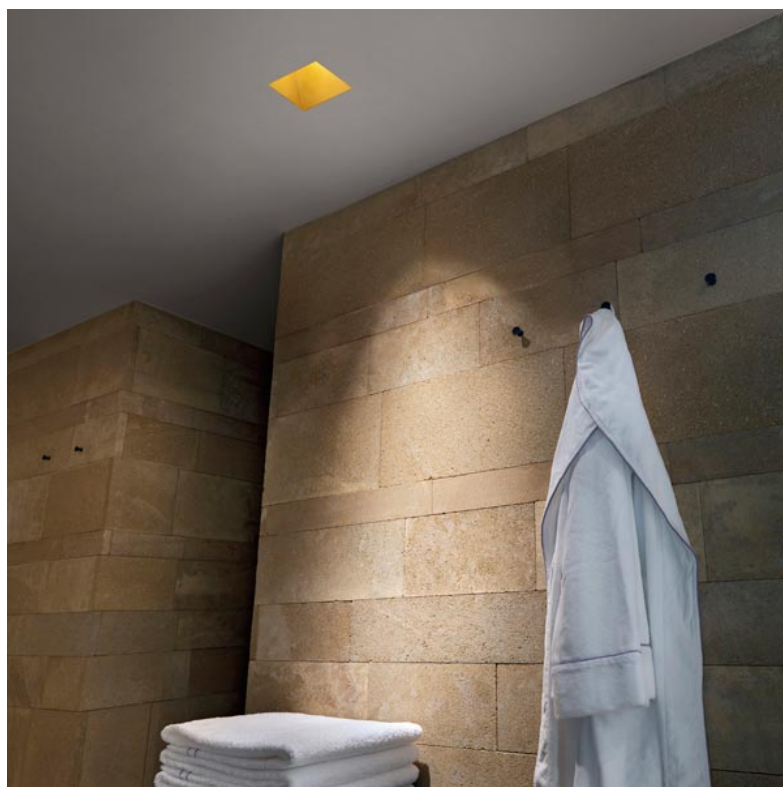


**Easy Kap 80 Square Adjustable Optic Flood**

designed by FLOS Architectural

Recessed luminaire with LED light source. Power supply not included. Installation frame not necessary.

- 03.4295.GL - 50° - 719lm Gold
- 03.4295.BI - 53° - 744lm White
- 03.4295.BU - 55° - 669lm Blue
- 03.4295.74 - 55° - 662lm Black
- 03.4295.CU - 48° - 703lm Copper



### CERTIFICATIONS



## Easy Kap 80 Square Adjustable Optic Flood . Accessories

### Power Supply



60.8534

#### Constant Current Power Supply for LED. 32W

Continuous current power supply of 32W, 230/240V - 50/60Hz with power current selected through adjustable 350/500/700 mA switch by trailing and leading edge dimming or push dimming.

Maximum lenght of 1.5 mm2 secondary conductor (m): 20

Maximum lenght of 2.5 mm2 secondary conductor (m): 15



60.8533

#### Constant Current Power Supply for LED. 25W

Continuous current power supply of 25W, 120-240V - 50/60Hz with power current selected through adjustable 350/500/700mA 1-10V switch or push dimming.

Maximum lenght of 1.5 mm2 secondary conductor (m): 10

Maximum lenght of 2.5 mm2 secondary conductor (m): 15



60.8847

#### Constant Current Power Supply for LED. 10-20W

Continuous current power supply of 10-20W, 110/240V - 50/60Hz with power current selected through adjustable 250/350/400/450/500/ 550/600/700 mA Dali switch. (Johnny 120 with accessories max 450 mA)

Maximum lenght of 1.5 mm2 secondary conductor (m): 10

Maximum lenght of 2.5 mm2 secondary conductor (m): 15



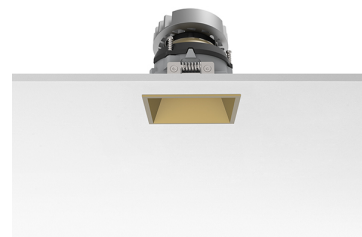
60.8880

#### Constant Current Power Supply for LED. 6W-100W/14W-240V

Continuous current power supply of 6W, 100V / 14W, 240V - 50/60Hz with 500 mA supply voltage.

Maximum lenght of 1.5 mm2 secondary conductor (m): 50

Maximum lenght of 2.5 mm2 secondary conductor (m): 50

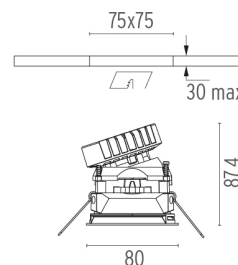


#### Easy Kap 80 Square Adjustable Optic Flood

designed by FLOS Architectural

Recessed luminaire with LED light source. Power supply not included. Installation frame not necessary.

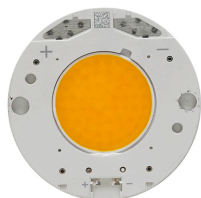
- 03.4295.GL - 50° - 719lm Gold
- 03.4295.BI - 53° - 744lm White
- 03.4295.BU - 55° - 669lm Blue
- 03.4295.74 - 55° - 662lm Black
- 03.4295.CU - 48° - 703lm Copper



### CERTIFICATIONS



## Easy Kap 80 Square Adjustable Optic Flood . Lamps



### LED Array

### Lamp category:

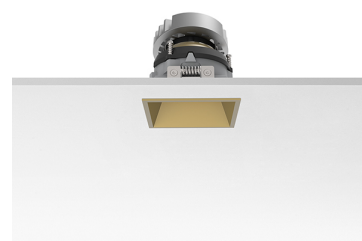
LED

### Socket:

Special base

### Lamp type:

LED Array

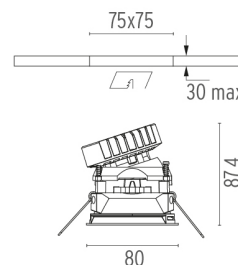


### Easy Kap 80 Square Adjustable Optic Flood

designed by FLOS Architectural

Recessed luminaire with LED light source. Power supply not included. Installation frame not necessary.

- 03.4295.GL - 50° - 719lm Gold
- 03.4295.BI - 53° - 744lm White
- 03.4295.BU - 55° - 669lm Blue
- 03.4295.74 - 55° - 662lm Black
- 03.4295.CU - 48° - 703lm Copper



### CERTIFICATIONS



## EASY KAP 80 SQUARE WALL-WASHER

<b>Number of heads</b>	1
<b>Mounting</b>	Ceiling recessed
<b>Lamps description</b>	LED Array DC 500 mA 8,7W 974 lm 3000K CRI 90
<b>Luminaire luminous flux</b>	Extreme Cut-off. See reference number
<b>Environment</b>	Indoor
<b>Notes</b>	Diffusing lens included

### OPTICAL

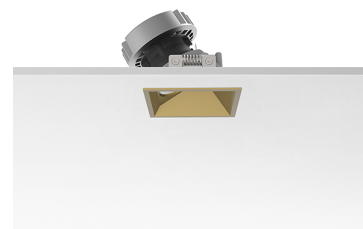
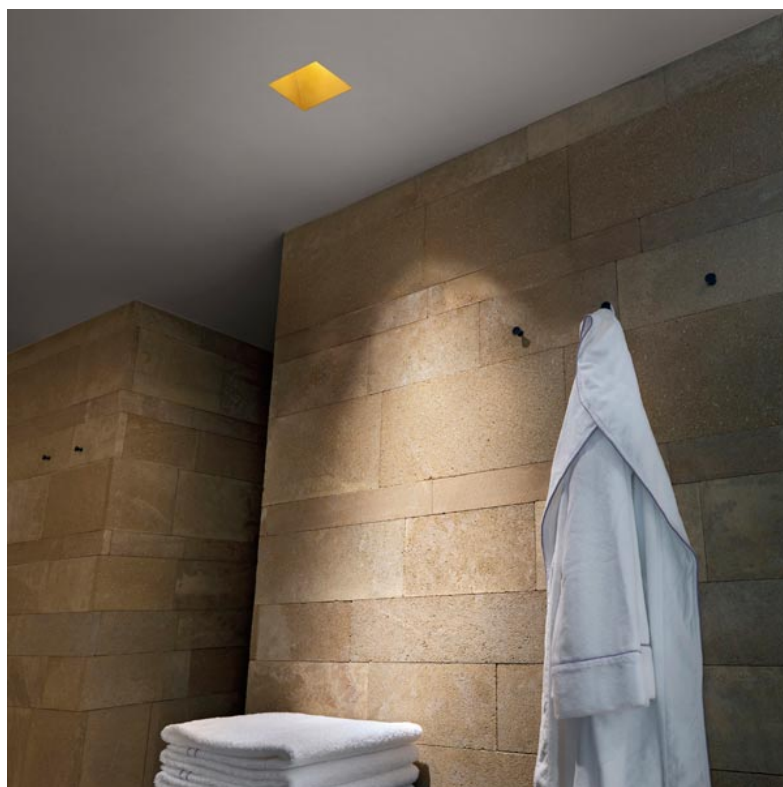
<b>Aiming</b>	Fixed
<b>Light distribution symmetry</b>	Asymmetric

### ELECTRICAL

<b>Transformer availability</b>	Separate item
<b>Transformer mounting</b>	Remote
<b>Transformer type</b>	Electronic, Electronic dimmable, Electronic dimmable I-10V, Electronic dimmable DALI
<b>Emergency</b>	Without
<b>Insulation class</b>	Class III

### PHYSICAL

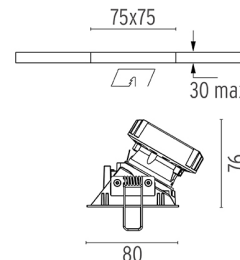
<b>Recessed depth (mm)</b>	81
<b>Construction material</b>	Die-cast aluminum
<b>Weight (kg)</b>	0,24



**Easy Kap 80 Square Wall-Washer**  
designed by FLOS Architectural

Recessed luminaire with LED light source. Power supply not included. Installation frame not necessary.

- 03.4198.GL - 28° - 732lm Gold
- 03.4198.B1 - 27° - 644lm White
- 03.4198.BU - 26° - 630lm Blue
- 03.4198.74 - 26° - 588lm Black
- 03.4198.CU - 28° - 650lm Copper



### CERTIFICATIONS





## Easy Kap 80 Square Wall-Washer . Accessories

### Power Supply



60.8534

#### Constant Current Power Supply for LED. 32W

Continuous current power supply of 32W, 230/240V - 50/60Hz with power current selected through adjustable 350/500/700 mA switch by trailing and leading edge dimming or push dimming.

Maximum length of 1.5 mm<sup>2</sup> secondary conductor (m): 10

Maximum length of 2.5 mm<sup>2</sup> secondary conductor (m): 15



60.8533

#### Constant Current Power Supply for LED. 25W

Continuous current power supply of 25W, 120-240V - 50/60Hz with power current selected through adjustable 350/500/700mA 1-10V switch or push dimming.

Maximum length of 1.5 mm<sup>2</sup> secondary conductor (m): 10

Maximum length of 2.5 mm<sup>2</sup> secondary conductor (m): 15



60.8847

#### Constant Current Power Supply for LED. 10-20W

Continuous current power supply of 10-20W, 110/240V - 50/60Hz with power current selected through adjustable 250/350/400/450/500/ 550/600/700 mA Dali switch. (Johnny 120 with accessories max 450 mA)

Maximum length of 1.5 mm<sup>2</sup> secondary conductor (m): 10

Maximum length of 2.5 mm<sup>2</sup> secondary conductor (m): 15



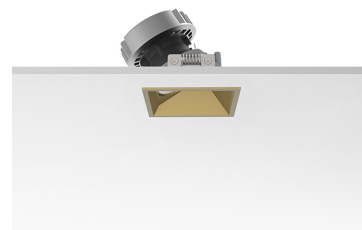
60.8880

#### Constant Current Power Supply for LED. 6W-100W/14W-240V

Continuous current power supply of 6W, 100V / 14W, 240V - 50/60Hz with 500 mA supply voltage.

Maximum length of 1.5 mm<sup>2</sup> secondary conductor (m): 50

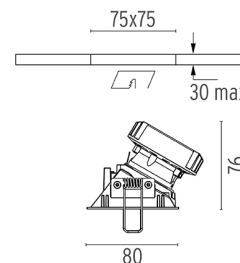
Maximum length of 2.5 mm<sup>2</sup> secondary conductor (m): 50



**Easy Kap 80 Square Wall-Washer**  
designed by FLOS Architectural

Recessed luminaire with LED light source. Power supply not included. Installation frame not necessary.

- 03.4198.GL - 28° - 732lm Gold
- 03.4198.BI - 27° - 644lm White
- 03.4198.BU - 26° - 630lm Blue
- 03.4198.74 - 26° - 588lm Black
- 03.4198.CU - 28° - 650lm Copper

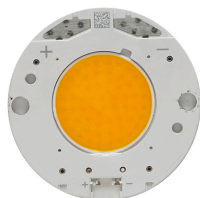


### CERTIFICATIONS





## Easy Kap 80 Square Wall-Washer . Lamps

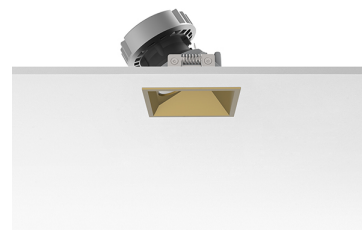


### LED Array

**Lamp category:**  
LED

**Socket:**  
Special base

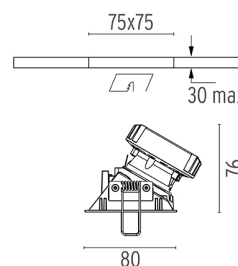
**Lamp type:**  
LED Array



**Easy Kap 80 Square Wall-Washer**  
designed by FLOS Architectural

Recessed luminaire with LED light source. Power supply not included. Installation frame not necessary.

- 03.4198.GL - 28° - 732lm Gold
- 03.4198.BI - 27° - 644lm White
- 03.4198.BU - 26° - 630lm Blue
- 03.4198.74 - 26° - 588lm Black
- 03.4198.CU - 28° - 650lm Copper



### CERTIFICATIONS

